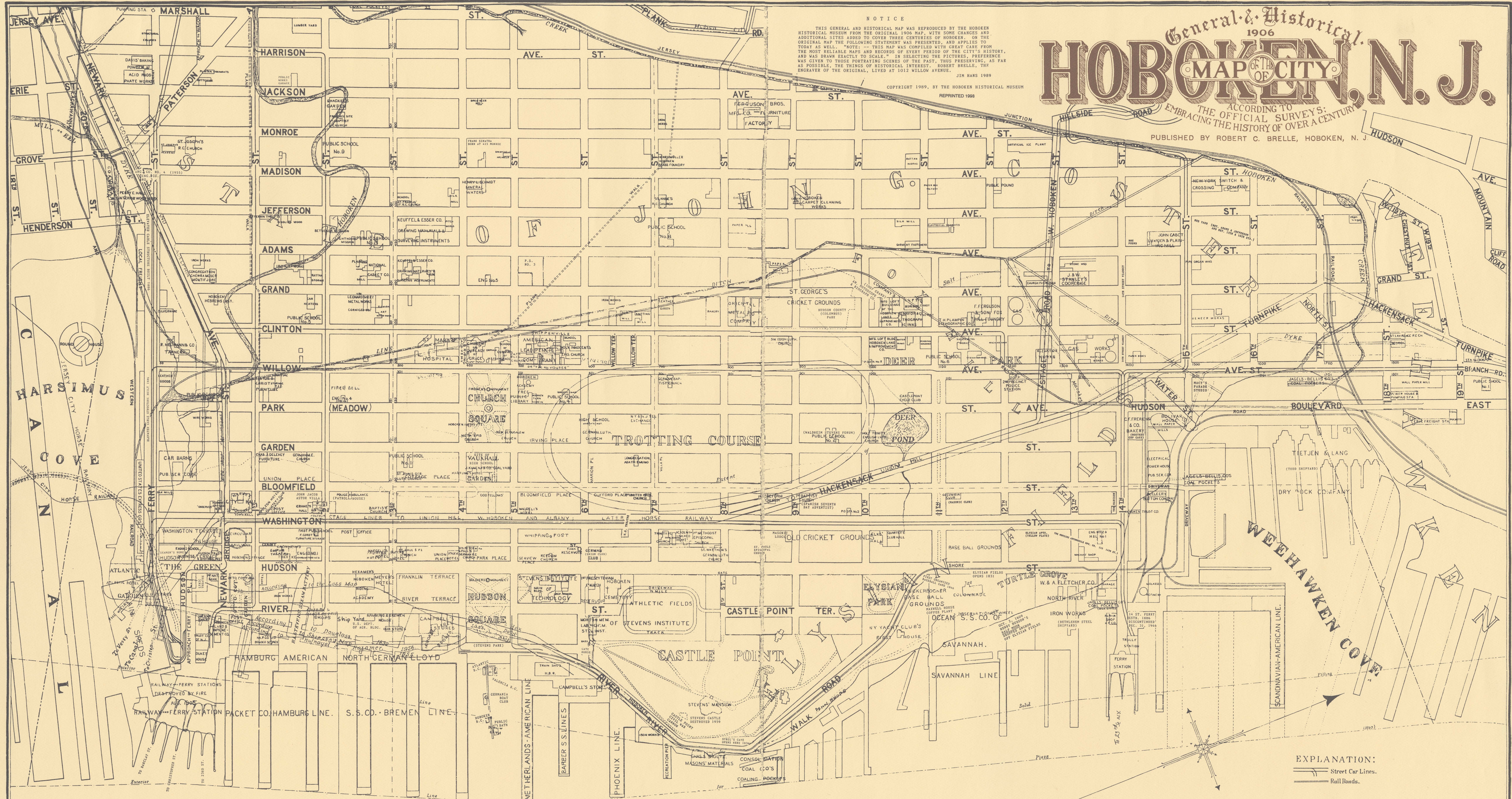


# General & Historical 1906 MAP OF THE CITY HOBOKEN, N. J.

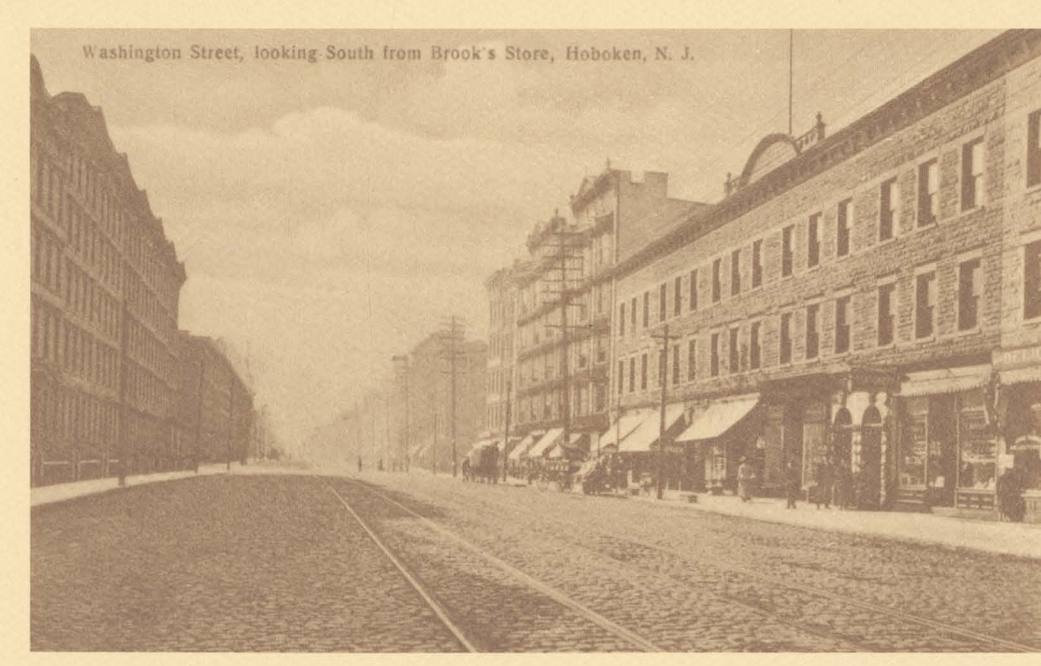
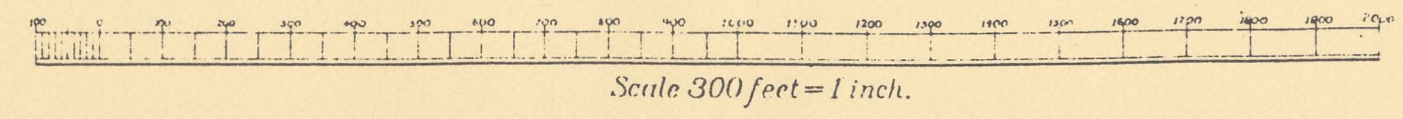
NOTICE  
THIS GENERAL AND HISTORICAL MAP WAS REPRODUCED BY THE HOBOKEN HISTORICAL MUSEUM FROM THE ORIGINAL 1906 MAP, WITH SOME CHANGES AND ADDITIONAL SITES ADDED TO COVER THREE CENTURIES OF HOBOKEN. ON THE ORIGINAL MAP THE FOLLOWING STATEMENT WAS PRESENTED, AND APPLIES TO TODAY AS WELL: "NOTES:—THIS MAP WAS COMPILED WITH GREAT CARE FROM THE MOST RELIABLE MAPS AND RECORDS OF EVERY PERIOD OF THE CITY'S HISTORY, AND WAS DRAWN EXACTLY TO SCALE. IN SELECTING THE VIEWS, PREFERENCE WAS GIVEN TO THOSE PORTRAYING SCENES OF THE PAST, THUS PRESERVING, AS FAR AS POSSIBLE, THE THINGS OF HISTORICAL INTEREST. ROBERT BRELLE, THE ENGRAVER OF THE ORIGINAL, LIVED AT 1012 WILLOW AVENUE."  
J. H. HARRIS 1909  
COPYRIGHT 1909, BY THE HOBOKEN HISTORICAL MUSEUM  
REPRINTED 1998

ACCORDING TO THE OFFICIAL SURVEYS:  
EMBRACING THE HISTORY OF OVER A CENTURY  
PUBLISHED BY ROBERT C. BRELLE, HOBOKEN, N. J.

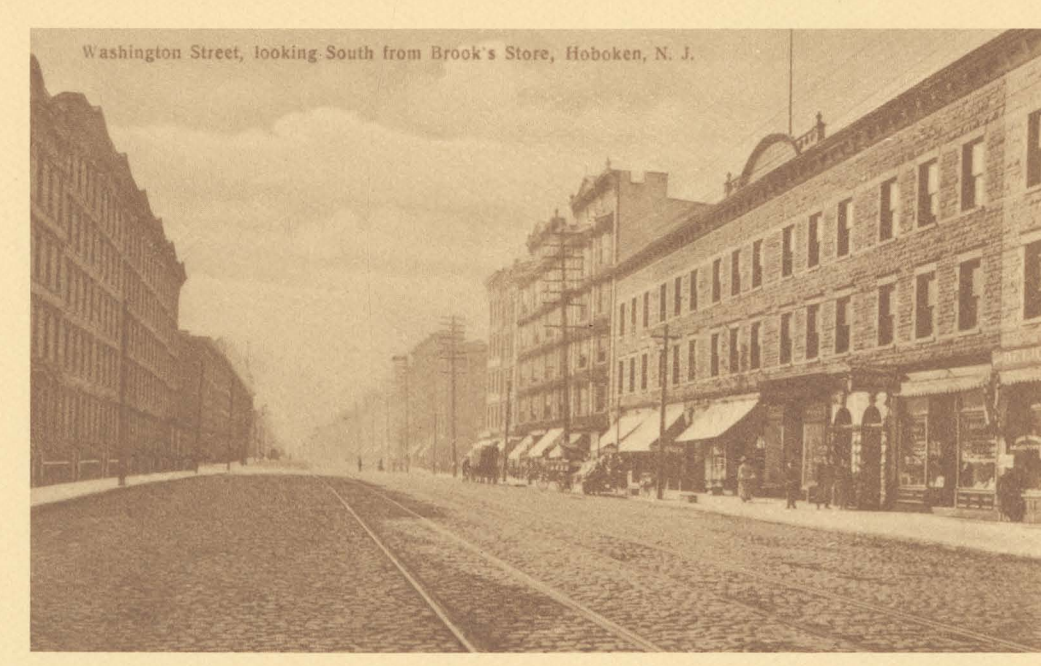
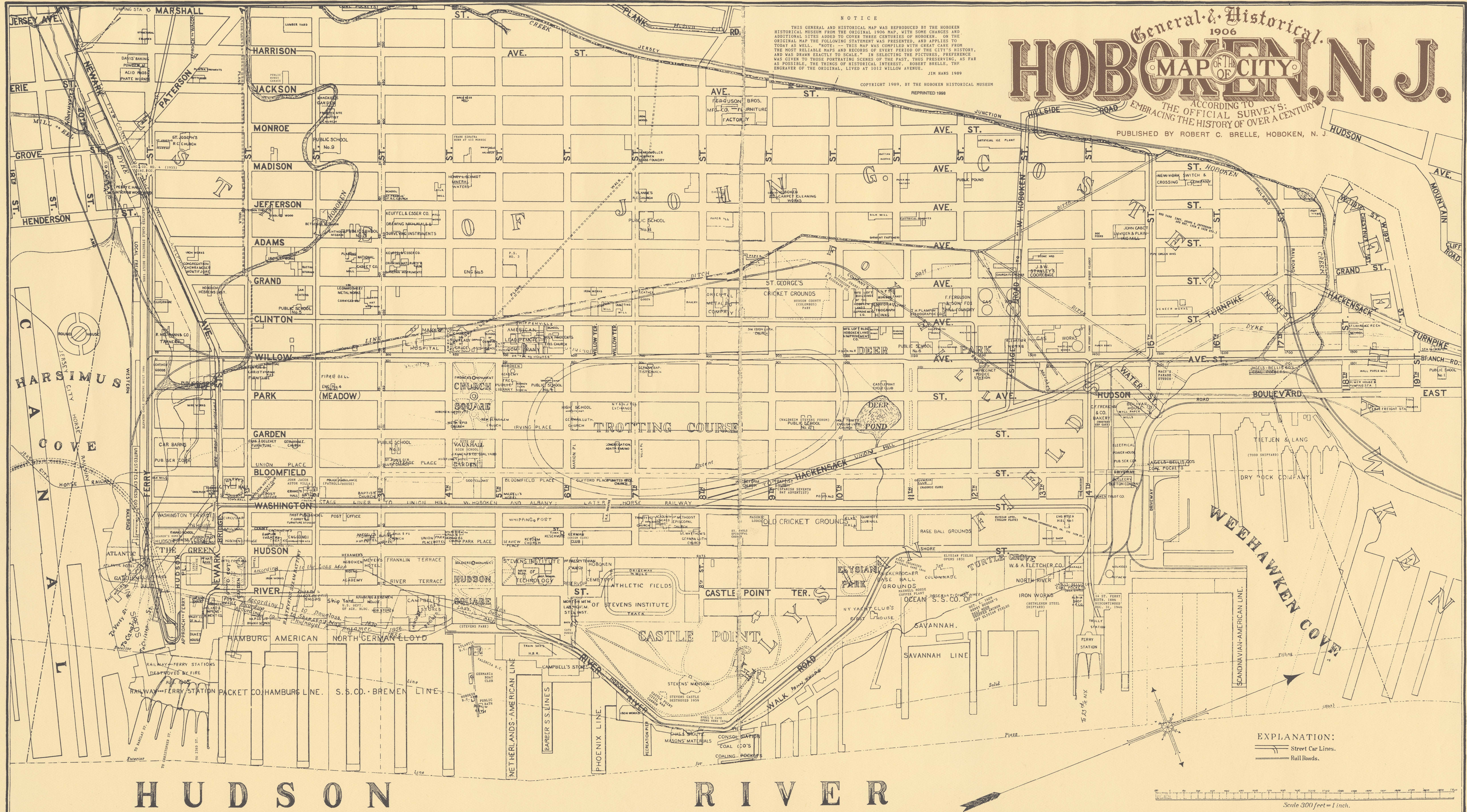


EXPLANATION:  
— Street Car Lines.  
— Rail Roads.

## HUDSON RIVER





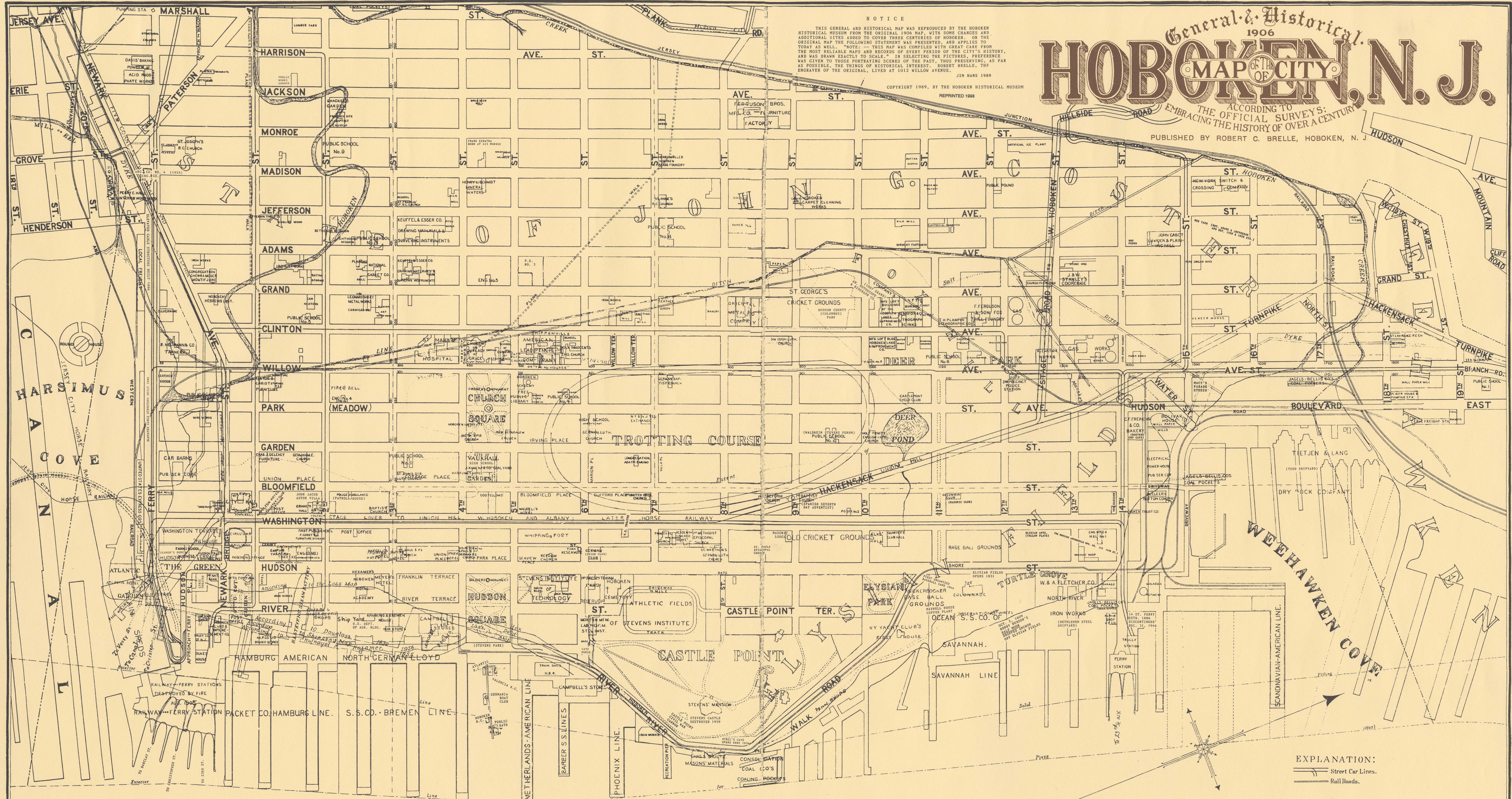




# General & Historical 1906 MAP OF THE CITY HOBOKEN, N. J.

NOTICE  
THIS GENERAL AND HISTORICAL MAP WAS REPRODUCED BY THE HOBOKEN HISTORICAL MUSEUM FROM THE ORIGINAL 1906 MAP, WITH SOME CHANGES AND ADDITIONAL SITES ADDED TO COVER THREE CENTURIES OF HOBOKEN. ON THE ORIGINAL MAP THE FOLLOWING STATEMENT WAS PRESENTED, AND APPLIES TO TODAY AS WELL: "NOTES:—THIS MAP WAS COMPILED WITH GREAT CARE FROM THE MOST RELIABLE MAPS AND RECORDS OF EVERY PERIOD OF THE CITY'S HISTORY, AND WAS DRAWN EXACTLY TO SCALE." IN SELECTING THE CITIES, PREFERENCE WAS GIVEN TO THOSE PORTRAYING SCENES OF THE PAST, THUS PRESERVING, AS FAR AS POSSIBLE, THE THINGS OF HISTORICAL INTEREST. ROBERT BRELLE, THE ENGRAVER OF THE ORIGINAL, LIVED AT 1012 WILLOW AVENUE.  
J. H. HARRIS 1909  
COPYRIGHT 1909, BY THE HOBOKEN HISTORICAL MUSEUM  
REPRINTED 1998

ACCORDING TO THE OFFICIAL SURVEYS:  
EMBRACING THE HISTORY OF OVER A CENTURY  
PUBLISHED BY ROBERT C. BRELLE, HOBOKEN, N. J.



EXPLANATION:  
— Street Car Lines.  
— Rail Roads.

## HUDSON RIVER

